

7 Acacia Avenue Goonellabah

Table of Contents

- | [Property Details](#)
- | [Photo Gallery](#)
- | [Map](#)
- | [Contact For Inspection](#)

Property Details

7 Acacia Avenue, Goonellabah



IT STILL FEELS NEW

4  2  2 

Nestled in Goonellabah's popular well-established estate, this exquisite modern home will offer a place to grow a young family in a great family orientated neighbourhood. Split level featuring high ceilings to the open plan kitchen, living and dining areas, finished off with a private and expansive view. The property caters effortlessly to a low maintenance lifestyle suited to many buyers. Terrific opportunity for families, first home buyers or investors.

- 4 Bedrooms
- 2 Bathrooms
- 2 Garages
- 1 Ensuite
- Air Conditioning
- Remote Garage
- Built In Robes
- Dishwasher

◆ 4 spacious bedrooms with built in robes, ceiling fans with the master bedroom including ensuite and walk in robe

◆ 2 separate living areas ◆ both with air-conditioning - media room plus open plan living area with central kitchen

◆ A contemporary home just a stroll to local playing fields and estate park

◆ Well presented both inside and out ◆ brand new carpet installed throughout

◆ Enjoy the low maintenance living, with landscaped established gardens, concrete footpaths and outdoor space to sit and relax

◆ Remote controlled double garage with secure internal access

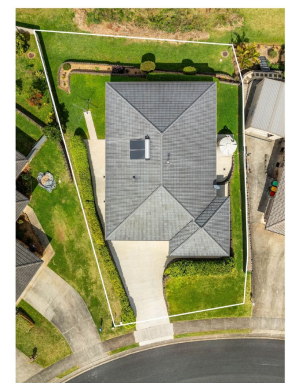
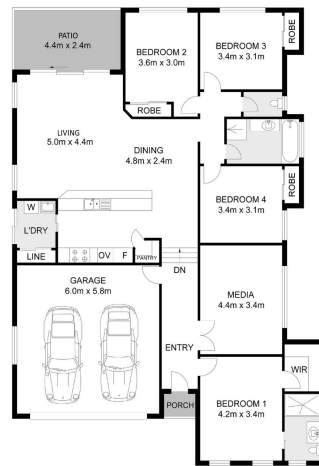
◆ Less than 1.5km to sports complex, Goonellabah Shopping Centre and Lismore Workers Sports Club

Act quickly to secure this exceptional property. Vacant ready for you to move straight in. Call today!

\$849,000

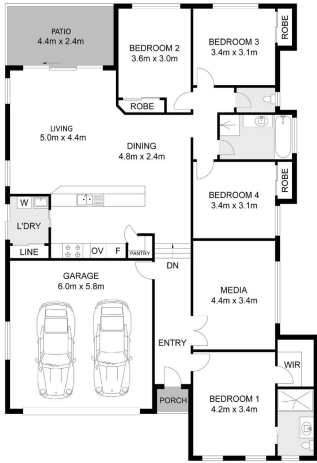
Photo Gallery





7 Acacia Ave, Goonellabah
 INT : 148.2m²
 EXT : 11.8m²
 GARAGE : 35.4m²

Scale in meters, indicative only. Dimensions are approximate. All information contained herein gathered from sources we believe to be reliable. However we cannot guarantee its accuracy and interested persons should rely on their own enquiries.



7 Acacia Ave, Goonellabah

INT: 146.2m²
EXT: 11.8m²
GARAGE: 35.4m²

Scale in meters, indicative only. Dimensions are approximate. All information contained herein gathered from sources we believe to be reliable. However we cannot guarantee its accuracy and interested persons should rely on their own enquiries.

Map



Contact For Inspection



BENJAMIN CONTE

LICENSED REAL ESTATE AGENT

0408 368 913

ben@walmurray.com.au